

# USB-C

CATALOGUE

---

VCOM INTERNATIONAL LTD.

# CONTENTS ▶

## 01

### ▶ USB4 Cable

CU540M	1
CU520M	1
CU540	1
CU540MR	1
CU541M	1
CU521M	1
CA444A	1
CA444B	1
CA444C	2
CA445E	2
CA444D	2
CA444E	2
CA445A	2
CU571	2
CU572	2

## 02

### ▶ USB C Docking

CU454A	3
CU450A	3
CU450B	3
CU4512	3
CU4511	3
CU425M	3
CU4591	4
CU4592	4
CU459	4
CU458	4
CU466	4
CU463	4
CU4283	5
CU4641	5
CU460	5
CU4371	5
CU4281	5
CU4282	5
CU4282A	6
CU465	6
CU4385	6
CU4351	6
CU4386	6
CU4611	6
CU4612	7
CU4704	7
CU4705	7
CU4681	7
CU4682	7
CU4706	7
CU4703	7

## 03

### ▶ USB C Dongle

CU423C	8
CU422C	8
CU423MC	8
CU422MC	8
CU423MCPD	8
CU425MC	8
CU480MC	9
CU480MCPD	9
CU480M	9
DU320M	9
CU423	9
CU421	9
CU422	9
CU422MB	9
CU423T	10
CU421T	10
CU452A	10
CU453A	10
DU325MA	10
DU325MC	10

## 04

### ▶ USB C HUB

DH307	11
DH307C	11
DH207	11
DH306	11
DH302	11
DH302C	11
CU4383	11
CU4383A	11
CU4284	12
DH311A	12
DH211AC	12
DH311B	12
DH312B	12
DH296	12
CU4311A	13
CU4311	13
DH297	13
DH298C	13
DH299C	13
DH298A	13
DH299A	13

## 05

### ▶ USB C Cable

CU406M	14
CU407M	14
CU410M	14
CU420M	14
CU405M	14
CU401M	14
CU402M	15
CU403M	15
CU409	15
CU420MGC	15
CU422MGC	15
CU425MGC	15
CU423MGC	16
CU405MGC	16
CU401MGC	16
CU541MG	16
CU521MG	16

## 06

### ▶ SSD Enclosure

CU850S	17
CU850N	17
CU850SN	17
CU860	17
CU870	17
CU880	17
CU890S	18
CU890N	18
CU851N	18
CU851SN	18
CU871	18
CU872	18



# USB4 CABLE

# CU541M

## USB C/M to C/M Cable with IC 40Gbps 240W USB4 Aluminum shell

Material: Aluminum shell+Braid+Gold plated plug  
Length:0.1m/1m/1.2m  
Data transfer: 40Gbps USB4  
Current Rating: 5A  
Power: Built in E-Marker Chip support 240W  
USB Power Delivery :Support  
Video: support 8K@60Hz resolution  
Function: Charge, Data Transfer, Video, Audio  
Compatible with Thunderbolt 3,USB3.2 & 3.1 Transfer protocol



### CU540M

USB C/M to C/M Cable  
with IC 40Gbps USB4  
PD100W  
Aluminum shell



### CU520M

USB C/M to C/M Cable  
with IC 20Gbps USB4  
PD100W  
Aluminum shell



### CU540

USB C/M to C/M Cable  
with IC USB4 40Gbps  
PD100W,Coaxial line,  
PVC molding



### CU540MR

USB C/M to C/M  
Cable with IC 40Gbps  
USB4 Right Angle  
Coaxial line,  
Aluminum shell



### CU541M

USB C/M to C/M  
Cable with IC 40Gbps  
240W USB4  
Aluminum shell



### CU521M

USB C/M to C/M  
Cable with IC 20Gbps  
240W USB4  
Aluminum shell



### CA444A

USB4 Type C Adaptor  
Aluminum shell  
40Gbps Data Transfer  
Max 100W Fast  
Charging  
8K Video Output



### CA444B

USB4 Type C Adaptor  
Aluminum shell  
40Gbps Data Transfer  
Max 100W Fast  
Charging  
8K Video Output

## CA444C



USB4 Type C Adaptor  
Aluminum shell  
40Gbps Data Transfer  
Max 100W Fast Charging  
8K Video Output

## CA444D



USB4 Type C Adaptor  
Aluminum shell  
40Gbps Data Transfer  
Max 100W Fast Charging  
8K Video Output

## CA444E



USB4 Type C Adaptor  
Aluminum shell  
40Gbps Data Transfer  
Max 100W Fast Charging  
8K Video Output

## CA445A



USB4 Type C Magnetic Adaptor  
Aluminum shell  
40Gbps Data Transfer  
Max 100W Fast Charging  
8K Video Output

## CA445E



USB4 Type C Magnetic Adaptor  
Aluminum shell  
40Gbps Data Transfer  
Max 100W Fast Charging  
8K Video Output

## CU571



USB4 Type-C To HDMI2.1+RJ45+USB A(10G)+USB C(10G)\*2+PD  
Aluminum Shell  
6 in 1

## CU572



USB4 Type-C to HDMI2.1(8K)+DP1.4(8K)+2xUSB-C(10G)+USB-A(10G)+USB-A(5G)  
+2xUSB2.0A+SD4.0+TF3.0+RJ45(1G)+Au+DC(150W, 100 to host)+Touch ID  
13 in 1



# USB C DOCKING

# CU4511

## USB Type C TO VGA+HDMI+USB3.0+PD+Audio Docking Aluminum Shell 5 in 1

Side 1: USB Type C Male

Side 2: VGA+HDMI+USB3.0+PD+Audio

HDMI :4KB30Hz for separate output, 1080P@60Hz for simultaneous output with VGA

VGA : 1080P@60Hz

Audio: TRS 3.5mm

USB: Up to 5Gbps, USB ports for data syncing

Support OTG function

USB-C(Charge): PD3.0 100W



### CU454A



USB Type C TO HDMI+USB3.0  
+PD Docking  
Aluminum Shell  
3 in 1

### CU450A



USB Type C TO HDMI\*2+USB2.0  
+PD Docking  
Aluminum Shell  
4 in 1

### CU450B



USB Type C TO HDMI\*2+USB3.0  
+PD Docking  
Aluminum Shell ,Support MST,HDCP  
4 in 1

### CU4512



USB Type C TO VGA+HDMI+USB2.0  
+PD Docking  
Aluminum Shell  
4 in 1, Support MST

### CU4511



USB Type C TO VGA+HDMI+USB3.0  
+PD+Audio Docking  
Aluminum Shell  
5 in 1

### CU425M



USB Type C TO HDMI+VGA+USB3.0\*3  
+TF+AUDIO+PD Docking  
Aluminum Shell  
8 in 1

# CU4611

USB Type C TO HDMI+USB-A(10G)\*2+USB-C DATA 10G+PD+RJ45  
Docking Aluminum Shell  
6 in 1

Side 1: USB Type C Male

Side 2: HDMI+USB-A(10G)\*2+USB-C DATA 10G+PD+RJ45

HDMI: Max 4K UHD 3840\*2160@60Hz

USB-A/C: Up to 10Gbps, USB ports for data syncing

RJ45: Up to 1000Mbps network

USB-C(Charge): PD3.0 100W

Support OTG function



## CU4591



USB Type C TO RJ45+PD Docking  
Aluminum Shell  
2 in 1

## CU4592



USB Type C TO HDMI+USB3.0\*2  
+RJ45+PD Docking  
Aluminum Shell  
5 in 1

## CU459



USB Type C TO RJ45+USB3.0\*2  
+PD Docking  
Aluminum Shell  
4 in 1

## CU458



USB Type C TO HDMI+USB3.0\*2+RJ45  
+TF+SD+PD Docking  
Aluminum Shell  
7 in 1

## CU466



USB Type C TO HDMI+USB3.0\*3+Audio  
+PD Docking  
Aluminum Shell  
6 in 1

## CU463



USB Type C TO HDMI+USB3.0\*3+RJ45  
+TF+SD+PD Docking  
Aluminum Shell  
8 in 1



# CU4703

USB Type C TO USB3.0\*3+USB2.0\*2+VGA+RJ45+SD+TF+Audio jack  
+HDMI+DP+ USB-C DATA\*2 +USB-C PD Docking  
Aluminum Shell  
15 in 1

Side 1: USB type C Male  
Side 2: USB3.0\*3+USB2.0\*2+VGA+RJ45+SD+TF+Audio  
jack+HDMI+DP+ USB-C DATA\*2 +USB-C PD  
USB3.0: Up to 50bps, USB ports for data syncing  
USB2.0: Up to 480Mbps, USB ports for data syncing  
HDMI: Max 4K UHD 3840\*2160@30Hz  
DP: Max 4K UHD 3840\*2160@30Hz  
VGA: 1080Pi@60Hz  
RJ45: Up to 1000Mbps network  
USB-C(Charge): Power Delivery 60W  
USB-C(data):Up to 50bps, USB ports for data syncing  
SD/TF: USB3.0,Support 2 cards reading simultaneously  
Audio Jack: TRS 3.5mm



## CU4283



USB Type C TO HDMI+USB3.0\*1  
+USB2.0\*2+PD Docking  
Aluminum Shell  
5 in 1

## CU4641



USB Type C TO HDMI+USB3.1(10G)\*3  
+TF+SD+PD+RJ45  
Docking Aluminum Shell  
8 in 1

## CU460



USB Type C TO HDMI+RJ45+USB 3.0 \*3  
+SD+TF+PD Docking  
Aluminum Shell  
8 in 1

## CU4371



USB Type C to USB-C PD+USB3.0\*2  
+SD+TF+HDMI Docking  
Aluminum Shell  
6 in 1

## CU4281



USB Type C TO HDMI+USB3.0\*1  
+USB2.0\*2+TF+SD  
Docking Aluminum Shell  
6 in 1

## CU4282



USB Type C TO HDMI+USB3.0\*1  
+USB2.0\*1+TF+SD+PD Docking  
Aluminum Shell  
6 in 1

USB-C Catalogue

## CU4282A



USB C TO USB3.0+USB2.0+SD/TF+HDMI+PD  
6 in 1

## CU4385



USB Type C TO HDMI+USB3.0\*2+TF+SD+PD Docking  
Aluminum Shell  
6 in 1

## CU4386



USB Type C TO USB3.0\*3+TF+SD+PD Docking  
Aluminum Shell  
6 in 1

## CU465



USB Type C TO HDMI+USB3.0\*2+RJ45+Audio+USB-C+PD Docking  
Aluminum Shell  
7 in 1

## CU4351



USB Type C TO HDMI+USB3.0+USB2.0+RJ45+TF+SD+PD Docking  
Aluminum Shell  
7 in 1

## CU4611



USB Type C TO HDMI+USB-A(10G)\*2+USB-C DATA 10G+PD+RJ45 Docking  
Aluminum Shell  
6 in 1

## CU4612



USB Type C TO HDMI+USB-A(100)\*2+USB-C  
DATA 10G+PDDocking  
Aluminum Shell  
5 in 1

## CU4704



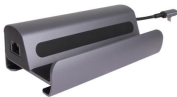
USB Type C TO DP+HDMI+VGA+USB3.0\*2  
+USB2.0+RJ45+SD+TF+PD+AUX Docking  
Aluminum Shell  
11 in 1, Support MST

## CU4705



USB Type C TO HDMI\*2+VGA+USB3.0\*3+RJ45  
+SD+TF+USB-C(PD&DATA)+AUX Docking  
Aluminum Shell  
11 in 1, Support MST

## CU4681



USB Type C TO HDMI+USB3.0\*3+RJ45+PD  
Docking Station for Steam deck  
Aluminum Shell  
6 in 1

## CU4682



USB Type C TO HDMI+USB3.0\*2+USB2.0+USB-C  
DATA+RJ45+PD  
Docking Station for Steam deck  
Aluminum Shell  
7 in 1

## CU4706



USB Type C TO HDMI\*2+DP +USB3.0\*3+TYPE C  
+USB2.0+RJ45+SD2.0+TF2.0+PD+DC 3.5mm  
13 in 1

L-Shape Type C to Type C Connector

## CU4703



USB Type C TO USB3.0\*3+USB2.0\*2+VGA+RJ45  
+SD+TF+Audio jack+HDMI+DP+ USB-C DATA\*2  
+USB-C PD Docking  
Aluminum Shell  
15 in 1



# **USB TYPE C DONGLE**

---

## USB Type C to Gigabit Ethernet Adapter

Connector 1: USB Type C Male  
 Connector 2: RJ45 connector  
 Chip: RTL8153  
 Data transfer: 1000 Mbps network  
 Shell material: Aluminum shell  
 Outer mold material: PVC  
 Length: about 20cm  
 Compatibility: Apple new Macbook/Google Chrome-book, etc  
 Backwards compatibility to 10/100 Mbps networks.  
 System Requirement: Windows 7/8/10 & Mac OS

## Solid Aluminum Alloy

With aluminum alloy and anodizing process



Not Deformed



Anti-fingerprint



Corrosion resistant

### CU423C



USB Type C to HDMI A/M cable  
 HDMI : Max 4K UHD 3840\*2160@30Hz  
 Plastic shell

### CU422C



USB Type C to DP cable  
 DP : Max 4K UHD 3840\*2160@60Hz  
 Plastic shell

### CU423MC



USB Type C to HDMI A/M cable  
 HDMI : Max 4K UHD 3840\*2160@60Hz  
 Aluminum Shell

### CU422MC



USB Type C to DP cable  
 DP : Max 4K UHD 3840\*2160@60Hz  
 Aluminum Shell

### CU423MCPD



USB Type C to HDMI A/M cable with PD  
 HDMI : Max 4K UHD 3840\*2160@60Hz  
 Aluminum Shell

### CU425MC



USB 3.1 C/M to Mini DP cable  
 Mini DP: Max 4K UHD 3840\*2160@60Hz  
 Aluminum Shell

## CU480MC



USB Type C to DP/M cable 8K@60Hz  
Resolution:Max 8K UHD  
8K@60Hz/4k@120Hz/2K@144Hz  
Gold plated  
Aluminum Shell

## CU480MCPD



USB Type C to DP/M+PD100W cable  
8K@60Hz  
Resolution:Max 8K UHD  
8K@60Hz/4k@120Hz/2K@144Hz  
Gold plated  
Aluminum Shell

## CU480M



USB Type C to DP/F Dongle  
8K@60Hz  
Resolution:Max 8K UHD  
8K@60Hz/4k@120Hz/2K@144Hz  
Gold plated  
Mini Aluminum Shell

## DU320M



USB Type C to Gigabit Ethernet  
Adapter  
Data transfer: 1000 Mbps network

## CU423



USB Type C to HDMI A/F adapter  
Cable  
Max Resolution:3840\*2160@30Hz  
Plastic shell

## CU421



USB Type C to VGA adapter Cable  
Max Resolution:1080P@60Hz  
Plastic shell

## CU422



USB Type C to DP adapter Cable  
Max Resolution:3840\*2160@30Hz  
Plastic shell

## CU422MB



USB Type C to DP Dongle  
DP: Max 4K UHD 3840\*2160@60Hz  
Mini Aluminum Shell

## CU423T



USB Type C to HDMI A/F Dongle  
HDMI : Max 4K UHD 3840\*2160@60Hz  
Aluminum Shell

## CU452A



USB Type C to HDMI A/F Dongle with  
PD  
HDMI : Max 4K UHD 3840\*2160@60Hz  
Aluminum Shell

## DU325MA



USB Type A to 2.5 Gigabit Ethernet Adapter

Connector 1: USB Type A Male  
Connector 2: RJ45 connector  
Chip: RTL8156B  
Data transfer: 2500 Mbps network  
Shell material: Aluminum shell  
Outer mold material: PVC

## CU421T



USB Type C to VGA Dongle  
VGA: 1080P@60Hz  
Aluminum Shell

## CU453A



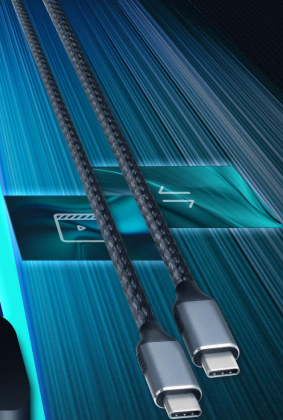
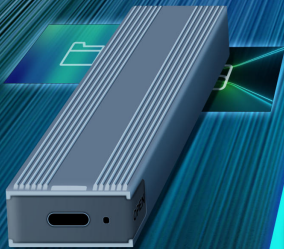
USB Type C to DP Dongle with PD  
DP : Max 4K UHD 3840\*2160@60Hz  
Aluminum Shell

## DU325MC



USB Type C to 2.5 Gigabit Ethernet Adapter

Connector 1: USB Type C Male  
Connector 2: RJ45 connector  
Chip: RTL8156B  
Data transfer: 2500 Mbps network  
Shell material: Aluminum shell  
Outer mold material: PVC



**USB C HUB**



# DH307C

USB Type C to USB3.0\*4 HUB  
plastic shell  
4 in 1

Side 1: USB Type C Male  
Side 2: USB 3.0\*4+micro USB power supply  
Material: Plastic shell+Nickel plated plug  
USB: Up to 50Mbps, USB ports for data syncing  
Compatible with USB 2.0 / 1.1 / 1.0  
Compatibility: Windows2000/XP/Vista/7/8/10& MAC OS X& Linux

## EXPAND 4 USB PORTS FOR YOUR DEVICE



### DH307

USB3.0\*4



USB 3.0 HUB  
plastic shell

### DH207

USB2.0\*4



USB 2.0 HUB  
plastic shell

### DH302

USB3.0\*4



USB Type A to USB3.0\*4 HUB  
ABS Shell  
4 ports

### CU4383

USB3.0\*4 P03.0



USB Type C to USB3.0\*4 HUB+USB C/F HUB  
Aluminum Shell  
5 in 1

### DH307C

USB3.0\*4



USB Type C to USB3.0\*4 HUB  
plastic shell  
4 in 1

### DH306

USB3.0\*4



USB 3.0 HUB  
Aluminum shell  
4 ports

### DH302C

USB3.0\*4



USB Type C to USB3.0\*4 HUB  
plastic shell  
4 in 1

### CU4383A

USB3.0\*4 P03.0



USB Type A to USB3.0\*4 HUB+USB C/F HUB  
Aluminum Shell  
5 in 1

## CU4284



USB Type C to USB3.0\*1+USB2.0\*3+USB C (power) Docking Aluminum Shell 5 in 1

## DH311A



USB Type C to USB3.0\*3+RJ45 Aluminum Shell 4 in 1

## DH211AC



USB Type C+Adapter TO USB3.0\*1+USB2.0\*2+RJ45 (100Mbps) Aluminum Shell 4 in 1

## DH311B



USB Type C to USB3.0\*3+RJ45 Aluminum Shell 4 in 1

## DH312B



USB 3.0 AM TO USB3.0\*3+RJ45 HUB Aluminum Shell 4 in 1

## DH296



USB Type C+Adapter TO USB3.0\*1+USB2.0\*3 HUB Aluminum Shell 4 in 1

## CU4311A



USB Type A TO USB3.0\*2+TF+SD  
+CF Decking  
Aluminum Shell  
5 in 1

## CU4311



USB Type C TO USB3.0\*2+TF+SD+CF Decking  
Aluminum Shell  
5 in 1

## DH297



USB Type C-Adapter TO USB3.0\*1  
+USB2.0\*2+SD+TF HUB  
Aluminum Shell  
5 in 1

## DH298C



USB Type C TO USB3.0\*1+USB2.0\*2 Cable  
Aluminum Shell  
3 in 1

## DH298A



USB3.0 TO USB3.0\*1+USB2.0\*2 Cable  
Aluminum Shell  
3 in 1

## DH299C



USB Type C TO USB3.0\*1+USB2.0\*1+SD/TF Cable  
Aluminum Shell  
4 in 1

## DH299A



USB3.0 TO USB3.0\*1+USB2.0\*1+SD/TF Cable  
Aluminum Shell  
4 in 1

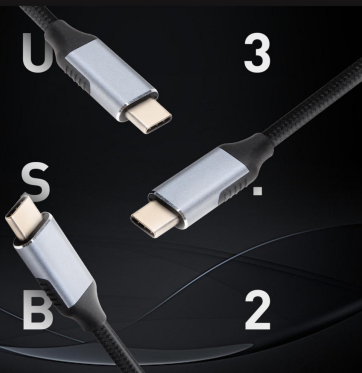


**USB C CABLE**

# CU410M

USB C/M to C/M Cable 10Gbps USB 3.2 Gen2 3A  
Aluminum shell

Material: Aluminum shell+Cotton Braid  
Length:1m  
Data transfer: 10Gbps USB3.2 Gen2  
Current Rating: 3A  
Power: 60W  
USB Power Delivery :Support  
Video: 4K@60Hz  
Function: Charge, Data Transfer, Video, Audio



## CU406M



USB C/M to C/M Cable 480Mbps  
USB 2.0 3A  
Aluminum shell

## CU407M



USB C/M to C/M Cable 480Mbps  
USB 2.0 5A  
Aluminum shell

## CU410M



USB C/M to C/M Cable 10Gbps  
USB 3.2 Gen2 3A  
Aluminum shell

## CU420M



USB C/M to C/M Cable 20Gbps  
USB 3.2 Gen2x2 5A  
Aluminum shell

## CU405M



USB A/M to C/M Cable 480Mbps  
USB 2.0 3A  
Aluminum shell

## CU401M



USB A/M to C/M Cable 10Gbps  
USB 3.2 Gen2 3A  
Aluminum shell

USB-C Catalogue

## CU402M



USB C/M to USB 3.0 Micro-BM cable 5Gbps USB 3.2 Gen 1  
Aluminum Shell  
Gold plated

## CU403M



USB C/M to USB 3.0 BM cable  
5Gbps USB 3.2 Gen 1  
Aluminum Shell  
Gold plated

## CU409



USB C/M to A/F Cable 5Gbps USB 3.2 Gen 1

## CU420MGC



Magnetic C/M to C/M Cable 20Gbps USB 3.2 Gen 2  
Aluminum Shell

## CU422MGC



Magnetic USB Type C to DP cable  
Aluminum Shell

## CU425MGC



Magnetic USB Type C to Mini DP cable  
Aluminum Shell

## CU423MGC



Magnetic USB Type C to HDMI cable  
Aluminum Shell

## CU405MGC



Magnetic C/M to A/M Cable 480Mbps USB 2.0  
Aluminum Shell

## CU401MGC



Magnetic C/M to A/M Cable 56Gbps USB 3.2 Gen 1  
Aluminum Shell

## CU541MG



Magnetic USB C/M to C/M Cable with IC 40Gbps 240W USB 4  
Aluminum shell

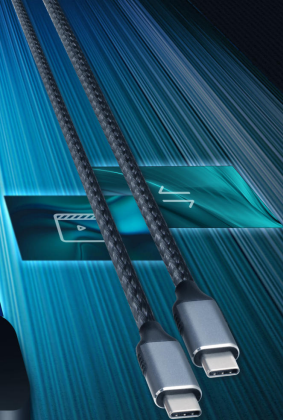
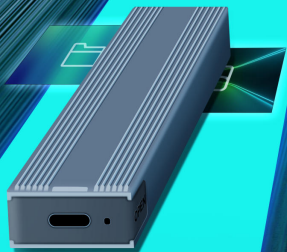
Material: Aluminum shell+Magnetic Gold plated plug  
Length:1.2m  
Data transfer: 40Gbps USB 4  
Current Rating: 5A  
Power: Built in E-Marker Chip support 240W  
USB Power Delivery :Support  
Video: support 8K@60Hz resolution  
Function: Charge, Data Transfer, Video, Audio  
Compatible with Thunderbolt 3,USB3.2 & 3.1 Transfer protocol

## CU521MG



Magnetic USB C/M to C/M Cable with IC 20Gbps 240W USB 4  
Aluminum shell

Material: Aluminum shell+Magnetic Gold plated plug  
Length:2m  
Data transfer: 20Gbps USB 4  
Current Rating: 5A  
Power: Built in E-Marker Chip support 240W  
USB Power Delivery :Support  
Video: support 8K@60Hz resolution  
Function: Charge, Data Transfer, Video, Audio  
Compatible with Thunderbolt 3,USB3.2 & 3.1 Transfer protocol



**SSD ENCLOSURE**



# CU850N

SSD Enclosure for M.2 PCI-E NVMe Protocol 10G

Material: Aluminum+ABS  
Interface: USB 3.1 Gen 2 Type-C  
Protocol: M.2 NVMe  
Compatibility: M.2 NVMe M Key & (M+B) Key  
2280/2260/2242/2230 SSD  
Transmission Speed: 10Gbps  
Max Capacity: 2TB  
Support UASP & Trim: support



## CU850S



SSD Enclosure for M.2 SATA  
AHCI protocol 6G

## CU850N



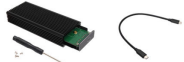
SSD Enclosure for M.2 PCI-E  
NVMe protocol 10G

## CU850SN



SSD Enclosure for M.2 NVMe and SATA  
dual protocol 10G&5G

## CU860



SSD Enclosure for M.2 PCI-E  
NVMe protocol 20G

## CU870



SSD Enclosure for M.2 PCI-E  
NVMe protocol 40G

## CU880



USB Type C TO HDMI+USB3.1\*2  
+RJ45+PD+ SSD Enclosure Docking  
Aluminum Shell  
6 in 1

USB-C Catalogue

## CU890S



SSD Clone Docking Station  
SATA protocol

## CU890N



SSD Clone Docking Station  
NVME protocol

## CU851N



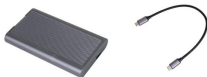
SSD Enclosure for M.2 PCI-E  
NVME protocol 10G

## CU851SN



SSD Enclosure for M.2  
NVME and SATA dual protocol 10G&6G

## CU871



USB4 SSD Enclosure for M.2 PCI-E  
NVME protocol 40G

## CU872



USB4 SSD Enclosure for M.2 PCI-E  
NVME protocol 40G



[www.vcom.vom.hk](http://www.vcom.vom.hk)

## VCOM INTERNATIONAL LTD.

▪ **Head Quarter**

→1/2F, Building D, Youke Business Center, Kexin Rd, Tangxia, Tianhe District,  
Guangzhou City, Guangdong Province, China

▪ **Cable & Electronic Factory**

→Xiaopenggang Industrial Zone, Longxi Town, Boluo District, Huizhou City,  
Guangdong Province, China

Tel: +86-752-6873123 Fax: +86-752-6873155